

Rammy - Plinio

**STAMPS ON STAMPS
CATALOG**

1947



Pavia (Italy) - July 2022

Acknowledgments

Attilio Papio (Italy)

Lou Guadagno (U. S. A.)

Lloyd Gilbert (G. B..)

Komlóssy Zoltán (Hungary)

Martin-Hirschbühl (Oberhelfenschwil - CH)

Michael Merritt (Mendham NJ - U. S. A.)

Plinio Richelmi (Pavia - Italy)

Rammy Molcho (Ramat Hasharon - Israel)

Catalogs



BOLAFFI
IL CATALOGO DEI FRANCOBOLLI



MICHEL
Europa-Katalog West 1996/97 (A-L)



SCOTT
ONLINE



STAMPWORLD



UNIFICATO
Super



1896  2021
YVERT & TELLIER

Index

Ethiopia	Pag	4
Greece	Pag	5
Liberia	Pag	6
Mexico	Pag	8
New Foundland	Pag	9
San Marino	Pag	10
U. S.	Pag	11

Editor

Rammy Molcho

(Ramat Hasharon - Israel)

<http://www.stampsonstamps.org/Rammy/index.htm>

Plinio Richelmi

(Pavia - Italy)

<http://www.stampsonstamps.eu/>

Only type A and type B SOS and postmark are listed in the catalog



Type A example



Inside



Type B example



Inside



postmark example



Inside

Legend

B = Bloch

PC = Postal Card

Country	Stamps	Block	Postal Card	Total
Ethiopia	2	0	0	2
Greece	3	0	0	3
Liberia	4	3	0	7
Mexico	5	1	0	6
San Marino	7	0	0	7
U. S.	1	1	0	2
TOTAL	22	5	0	27

Ethiopia



#1 - 2



Scott: #273-7

Issued: 18.4.1947

50th Anniversary, Ethiopian Postal Service (in 1944)



Inside #273: Ethiopia Type A2 (Pic of #5)



Inside #277: Ethiopia Type A1 (Pic of #3)

Greece



#4 to #6



Scott: #511, #513, #531

Issued: 20.10.1947 (#513), 12.4.1948 (#511), 15.9.1950 (#531)

Return of the Dodecanese to Greece



Inside #511, #513, #531: Revolutionary Stamps of 1912 Used in Aegean Islands (1912-1947)

Liberia



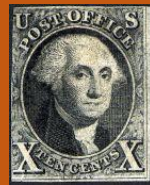
#1 to #4



Scott: #300, #C54-6
Issued: 6.6.1947
Centenary, US Stamps



Inside #300, #C54-6: U.S. #1

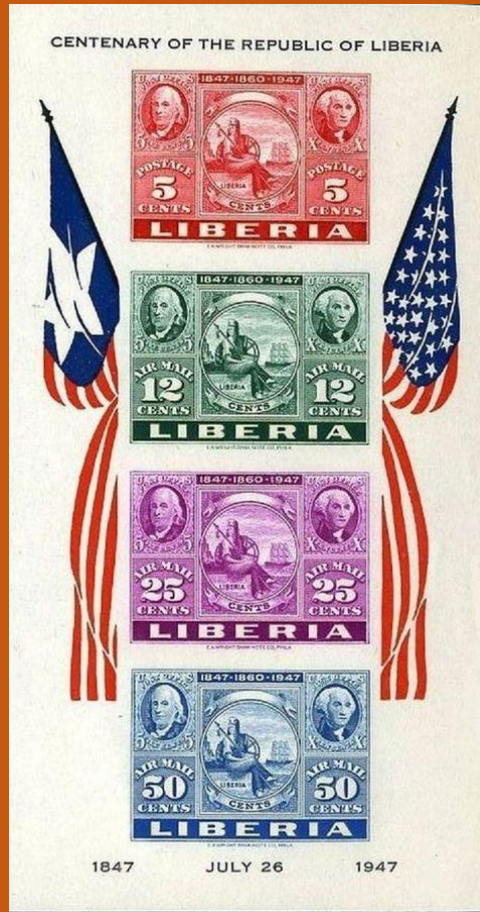
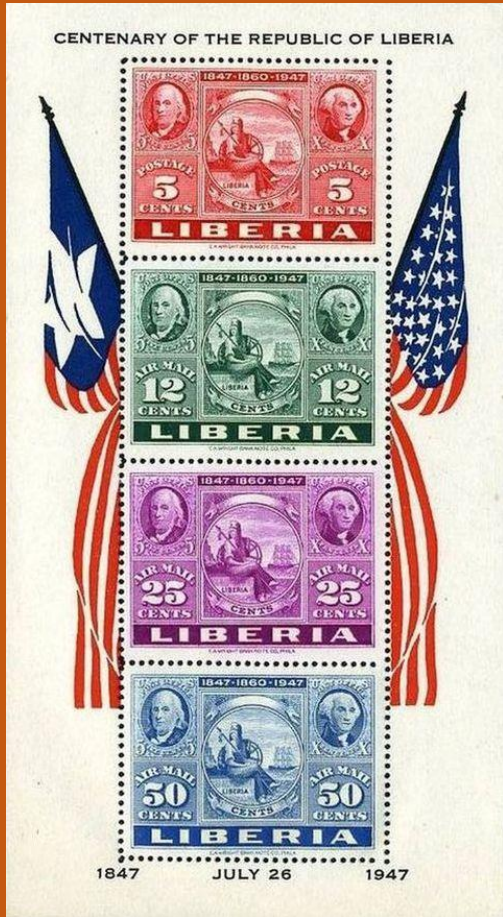


Inside #300, #C54-6: U.S. #2

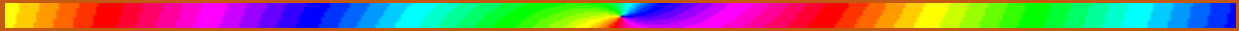


Inside #300, #C54-6: Liberia Type A1 (Pic of #1 and #3)

#B1 to #B3



Scott: #C56a



Mexico



#11 to #15



Scott: #826-7 Scott:#C167-9

Issued: 16.5.1947

CIPEX

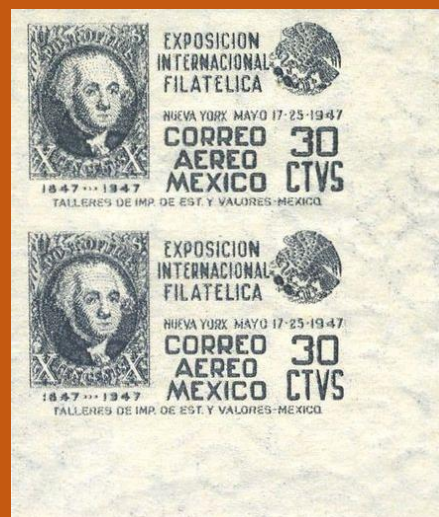


Inside #826, #C167, #C169: Mexico #1



Inside #827, #C168: US #2

#B1



Scott: #C168a

New Foundland



#1



Scott: #269

Issued: 21.6.1947

Princess Elizabeth's 21st Birthday



Inside #269: Newfoundland #247 with Updated Portrait (B)





San Marino

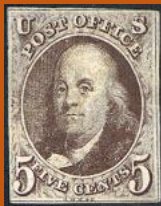
#1 to #7



Scott: #266-7, #268, #269-71, #C55

Issued: 24.12.1947

Centenary, US Stamps



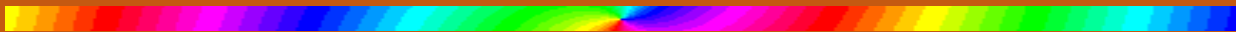
Inside #266-71, #C55: US #1



Inside #267, #269-71: US #2



Inside #267, #269-71: US #122



United States



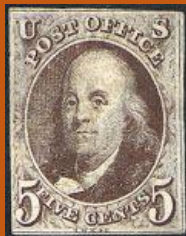
#1



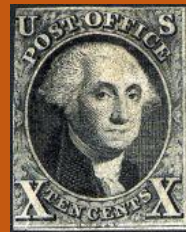
Scott: #947

Issued: 17.5.1947

Centenary, US Postage Stamps

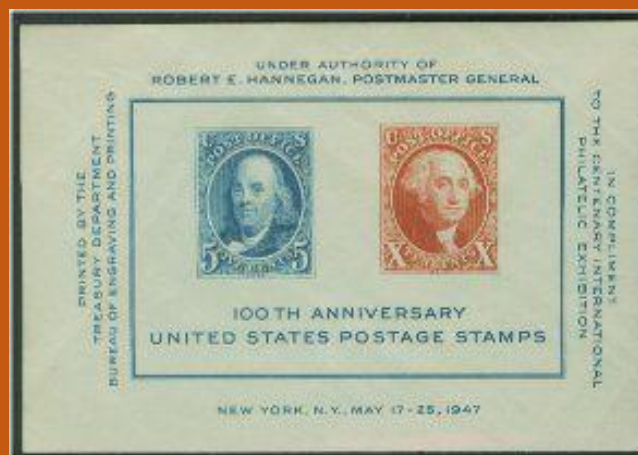


Inside #947: US #1 (B)



Inside #947: US #2 (B)

#B1



Scott: #948

Issued: 19.5.1947

CIPEX



Inside #947: US #1 (B)



Inside #947: US #2 (B)

