

**Rammy - Plinio**

**STAMPS ON STAMPS  
CATALOG**

**VOL VII - Part 5**

**PENNY BLACK**

**ASIA**



**Pavia (Italy) - January 2022**

## Acknowledgments

Attilio Papio (Italy)

Lou Guadagno (U. S. A.)

Lloyd Gilbert (G. B..)

Komlóssy Zoltán (Hungary)

Martin-Hirschbühl (Oberhelfenschwil - CH)

Michael Merritt (Mendham NJ - U. S. A.)

Plinio Richelmi (Pavia - Italy)

Rammy Molcho (Ramat Hasharon - Israel)

## Catalogs



## Index

Ajman	Pag. 5
Azerbaijan	Pag. 8
Bangladesh	Pag. 9
Bhutan	Pag. 10
China	Pag. 14
Fujera	Pag. 15
India	Pag. 16
Indonesia	Pag. 17
Japan	Pag. 18
Korea North	Pag. 19
Kyrgyzstan	Pag. 23
Laos	Pag. 24
Macao	Pag. 25
Malaysia	Pag. 26
Maldives	Pag. 27
Mongolia	Pag. 31
Singapore	Pag. 35
Sri Lanka	Pag. 36
Taiwan	Pag. 37
Transnistria	Pag. 38
Umm Al Qiwain	Pag. 39
Vietnam North	Pag. 41

## Editor

**Rammy Molcho**

**(Ramat Hasharon - Israel)**

<http://www.stampsonstamps.org/Rammy/index.htm>

**Plinio Richelmi**

**(Pavia - Italy)**

<http://www.stampsonstamps.eu/>

Only type A and type B SOS and postmark are listed in the catalog



Type A example



Inside



Type B example



Inside



postmark example



Inside

### Legend

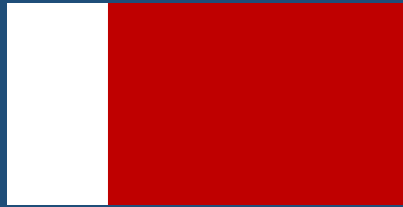
B = Bloch

PC = Postal Card

Country	Stamps	Block	Postal Card	Total
Ajman	7	7	0	14
Azerbaijan	0	1	0	1
Bangladesh	2	0	0	2
Bhutan	13	13	0	26
China	0	0	1	1
Fujera	0	1	0	1
India	1	0	0	1
Indonesia	0	1	0	1
Japan	0	1	0	1
Korea North	5	4	0	9
Kyrgyzstan	0	1	0	1
Laos	1	0	0	1

<b>Macao</b>	<b>0</b>	<b>1</b>	<b>0</b>	<b>1</b>
<b>Malaysia</b>	<b>0</b>	<b>1</b>	<b>0</b>	<b>1</b>
<b>Maldives</b>	<b>8</b>	<b>7</b>	<b>0</b>	<b>15</b>
<b>Mongolia</b>	<b>2</b>	<b>3</b>	<b>0</b>	<b>5</b>
<b>Singapore</b>	<b>1</b>	<b>1</b>	<b>0</b>	<b>2</b>
<b>Sri Lanka</b>	<b>1</b>	<b>0</b>	<b>0</b>	<b>1</b>
<b>Taiwan</b>	<b>1</b>	<b>0</b>	<b>0</b>	<b>1</b>
<b>Transnistria</b>	<b>0</b>	<b>1</b>	<b>0</b>	<b>1</b>
<b>Umm Al Quiwain</b>	<b>2</b>	<b>1</b>	<b>0</b>	<b>3</b>
<b>Vietnam North</b>	<b>1</b>	<b>1</b>	<b>0</b>	<b>2</b>
<b>TOTAL</b>	<b>45</b>	<b>45</b>	<b>1</b>	<b>91</b>

# Ajman



**#1 - #3 - #5 - #7**



Scott: #37-44

Issued: 6.5.1965

Gibbons Catalogue Centenary Exhibition

**#B1 to #B3**







Scott: #43a1, #44a, #44a1  
 Issued: 6.5.1965  
 125<sup>th</sup> Anniversary, Penny Black



[G-B]

**#10 - #11 - #13**



MK #72-76  
 Issued: 2.1.1966  
 Cairo Stamp Centenary Exhibition  
 Scott #38-43 overprint



[? - ?]

# #B4 - B5



MK #77-78  
Scott #43a-44a overprint



[G-B]

# #B6 - B7



Michel BI A9-B9  
Issued: 0.0.1967  
Overprint 1965 with new values (Dirham & Rial)



[G-B]



# Azerbaijan



#B9



Scott: #1081

Issued: 01.04.2015

The 175th Anniversary of the first postage stamp of the world



[M-H]



# Bangladesh



#3 - 4

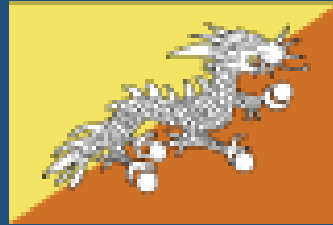


Scott: #345-6  
Issued: 6.5.1990  
150th Anniversary, Penny Black

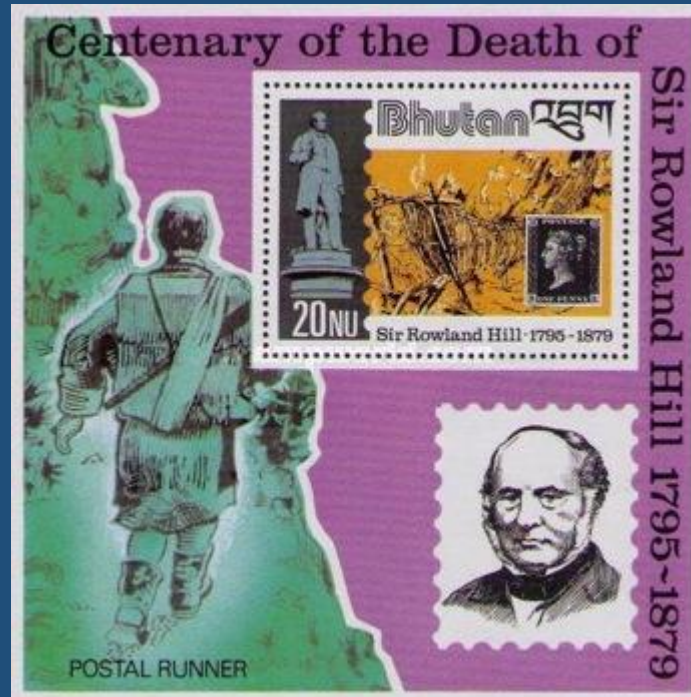


[S-?]

# Bhutan



#B1



Scott: #309

Issued: 6.5.1980

Death Centenary of Sir Rowland Hill



[? - ?]

# #5 to #16



Scott: #894-905  
 Issued: 9.10.1990  
 150<sup>th</sup> Anniversary, Penny Black

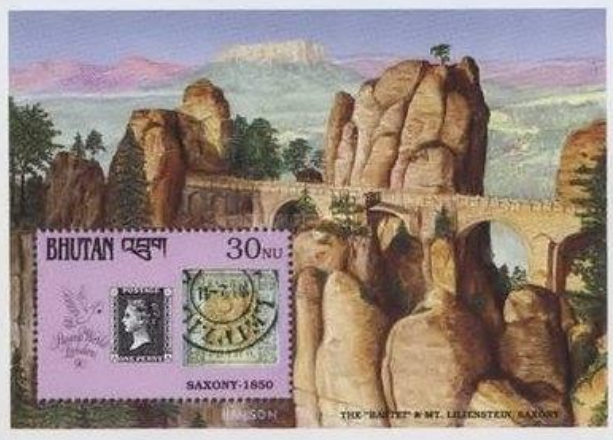


[A-A]

# #B16 to #B27











Scott: #906-17 – SW: #1369/87  
 Issued: 09.10.1990  
 London '90

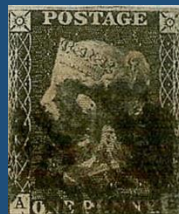


[A-A] [F-E]

## #17

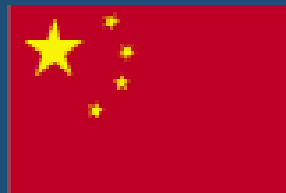


Scott: #1135  
 Issued: 17.12.1996  
 The Penny Black



[A-B]

# China (PRC)



#PC9



Postal Card #JP210  
Issued: 00.00.2015  
Penny Black & Rowland Hill



[S-A]

# Fujeira



#B1



Michel #58-59Block2A

Issued: 27.1.1966

Stamp Centenary Exhibition Cairo, January 1966



[?/?]

# India



#14



Scott: #1312

Issued: 6.5.1990

150th Anniversary, Penny Black



[N-B]



# Indonesia



#B3



Scott: #1902

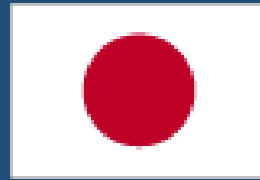
Issued: 22.5.2000

Stamp Show 2000 Exhibition



[R-M - wrong] in logo

# Japan



#B2



Scott: #????

Issued: 01.11.1969

JAPEX '69



[D-J]

# Korea North



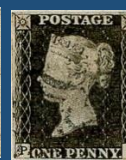
## #1 - 2



Scott: #1923-4 (SG #N1953-4)  
 Issued: 1.3.1980  
 Death Centenary of Sir Rowland Hill

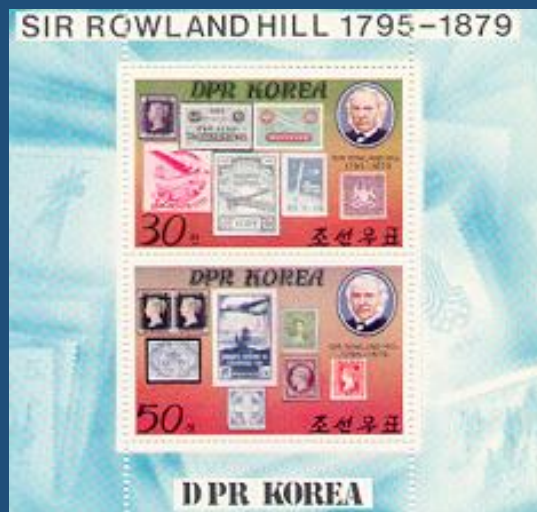


[R-H]



[P-I] [P-J]

## #B1



Scott: #1924a



[R-H]



[P-I] [P-J]

# #3

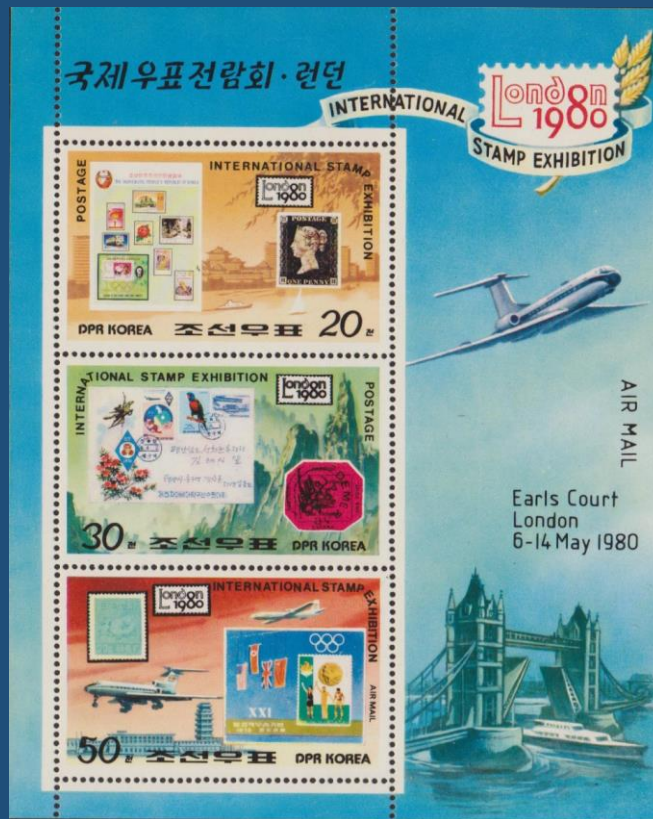


Scott: #1938-42 (SG #N1968-72)  
Issued: 6.5.1980  
London '80



[?/?]

# #B2



Scott: 1943 (SG #MS N1973)



[?/?]



# #14



Scott: #2121 - SG #N2125 (Y&T 1694)

Issued: 9.10.1981

Philatokyo '81



[H-?]

# #B6



Scott: #2123a



[H-?]

---

## #B9



Scott: #2319 - SG #MS N2335



[?/?]

---

## #40



Scott: #2855-60 SG #N2901-2  
Issued: 27.8.1989  
150th Anniversary, Penny Black



[S-K]

# Kyrgyzstan



#B1



SW: #987

Issued: 02.07.2015

175th Anny First Postage Stamp



[M-H]



# Laos



## #10



Scott: #1009  
Issued: 26.4.1990  
Stamp World London '90



[R-I]

# Macao



#B2



Scott: #616

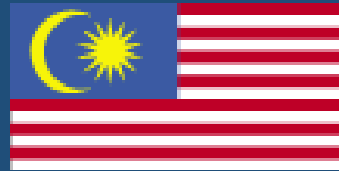
Issued: 3.5.1990

150th Anniversary, Penny Black



[N-?]

# Malaysia



#B15



Scott: #1546

Issued: 30.04.2015

175th Anniversary Penny Black



[P-L]



# Maldives Isl.



**#11**



Scott: #797

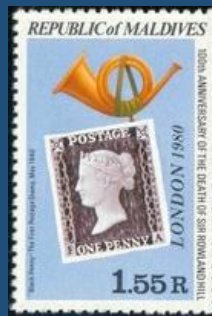
Issued: 28.2.1979

Death Centenary of Sir Rowland Hill



[F-A]

**#13**



Scott: #853

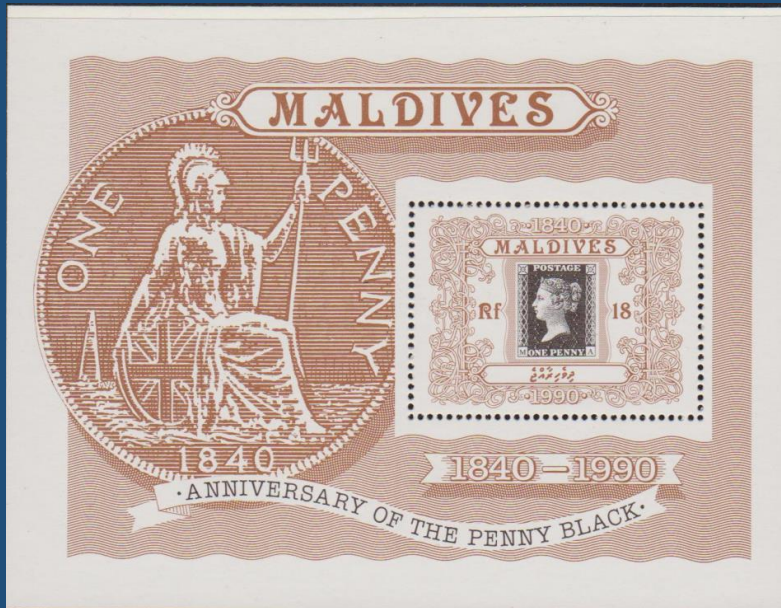
Issued: 6.5.1979

Maldives #797, 798 Overprinted "London 1980"



[F-A]

# #B4



Scott: #1410  
 Issued: 3.5.1990  
 150th Anniversary, Penny Black



[M-K]

# #B7 to #B10

- EAST INDIAN RAILWAY 2-2-2 FAWCETT 1860.** Built by Kitsons of Leeds, Yorkshire for the beginnings of the East Indian Railway, later one of the great railways of India.
- EAST INDIAN RAILWAY STANDARD 4-4-0 EXPRESS 1863.** Fifty of these locomotives produced in 1863/4. Designed by A. W. Hancock and built by Neilson Reid, and Dubs of Glasgow, twenty-five by each. They were wholly British in design and appearance but built to the standard broad girth gauge of Indian main lines.
- BENGAL-NAGPUR RAILWAY 4-4-2 EXPRESS 1926.** An Anglo-Indian version of the famous French six-wheel four-cylinder compound locomotive. Built by the North British Locomotive Co. Ltd., an amalgamation of Neilson Reid, and Dubs of Glasgow.
- GREAT PENINSULAR RAILWAY 4-6-0 CLASS HPS 1924.** One of several advanced and generally similar designs conforming to Indian Railway Standards Committee specifications. Large numbers ordered from Great Britain in the mid-twenties with further orders in 1947 for more large orders. Built by Vulcan Foundry of Newton-le-Willows, Lancashire.
- NORTH WESTERN RAILWAYS CLASS X52 4-6-2 PACIFIC 1932.** Authorized by the Indian Railway Board as one of a series of standard powerful heavy duty passenger and mail locomotives.
- INDIAN NATIONAL RAILWAYS STANDARD NARROW GAUGE CLASS VP 4-6-2 1948 to 1970.** Built in large numbers (over 800) for narrow metre gauge rail networks by British, German, American and Indian manufacturers. Many remain in service to this day.

Stamp Show 2000  
 Oriental Railway History  
**INDIA**

- SHANGHAI-NANKING 4-6-2 PASSENGER/TANK ENGINE 1909.** A thoroughly modern design built for a newly created line by the North British Locomotive Co. Ltd. of Glasgow.
- SHANGHAI-NANKING RAILWAY 4-2-2 IMPERIAL YELLOW 1910.** Built by Kerr, Stuart & Co. of Stranraer-Trent, Stranraer-shire. The main line out of Shanghai was low and suited to operation by engines with seven foot single driving wheels hauling high speed light-weight mail and passenger trains.
- MANCHURIAN RAILWAY 4-6-2 PACIFIC 1914.** American built for Japanese owned S. Manchurian Railway linking broad gauge Russian owned Chinese Eastern Railway to standard gauge railways of China proper.
- CHINESE NATIONAL RAILWAYS HANKOW LINE 4-6-4 1934.** Imposing and very efficient mixed traffic locomotive built by Vulcan Foundry of Newton-le-Willows, Lancashire for heavy freight and passenger work while burning low grade coal. Twenty four built remaining in service to 1960 and beyond.
- CHINESE NATIONAL RAILWAYS CLASS SY 2-8-2 1942.** Following the Communist revolution in China of 1949 and the resulting rapid expansion of rail networks, a large quantity of Soviet Russian motive power and rolling stock was imported and later built in China conforming to this day.
- CHINESE NATIONAL RAILWAYS CLASS CJ 2-10-2 1948.** Russian designed. Chinese built mixed traffic locomotives still in production and service today.

Stamp Show 2000  
 Oriental Railway History  
**CHINA**



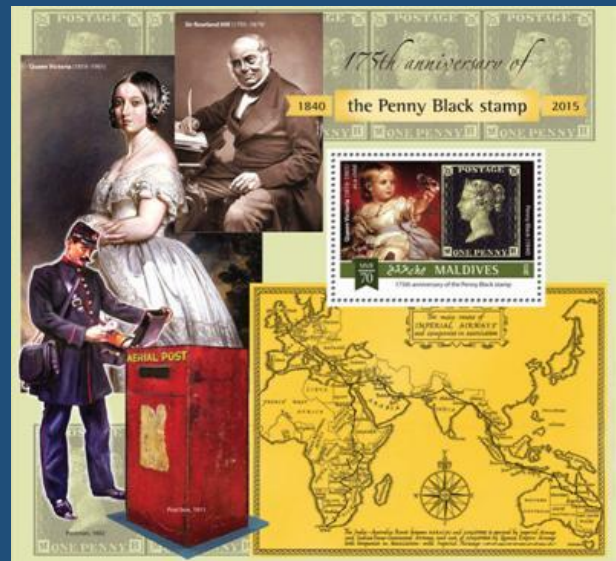
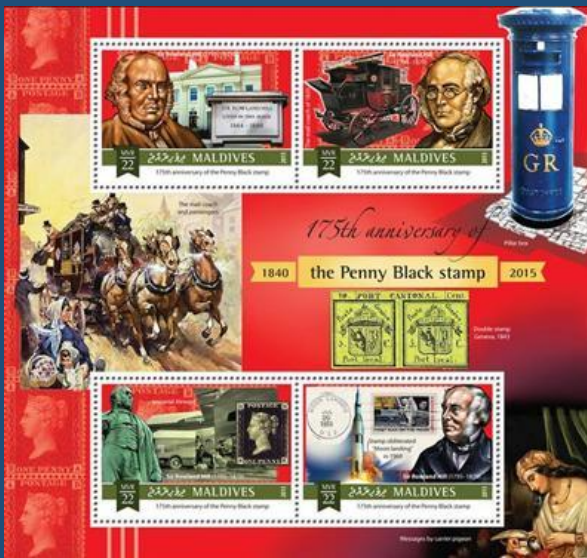


Scott: #2442- 5  
 Issued: 22.5.2000  
 Stamp Show 2000 Exhibition

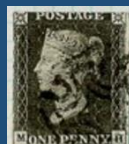


[R-M wrong] (In Logo)

## #B13 - B14



SW: #6048/51 - #6052  
 Issued: 15.09.2015  
 175th Anniversary Penny Black



[M-H]



# #B15

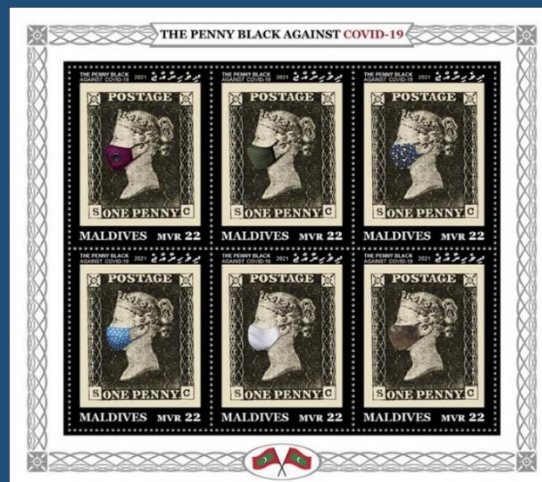


SW: #6502/5  
Issued: 08.09.2016  
Royal Mail



[M-H]

# #31 - 36



Scott: #????  
Issued: 11.10.2021  
Penny Black Against Covid-19

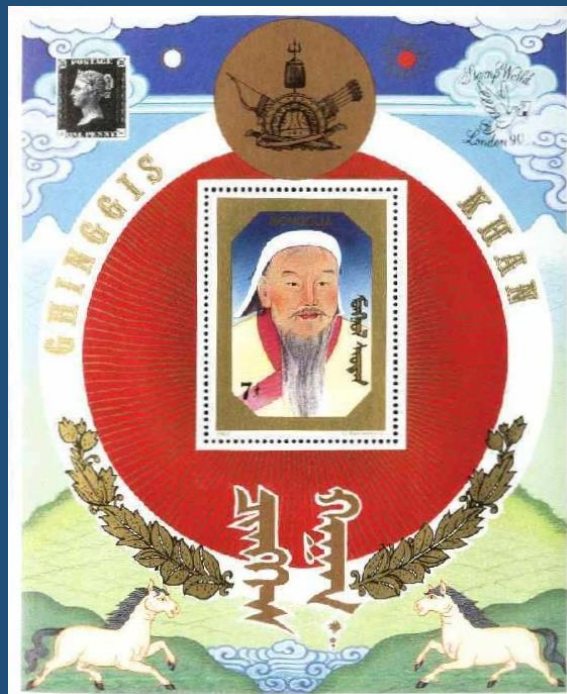


[S-C]

# Mongolia



#B14



Scott: #1850  
Issued: 8.5.1990  
London '90



[?/?] (in Margin)

#49



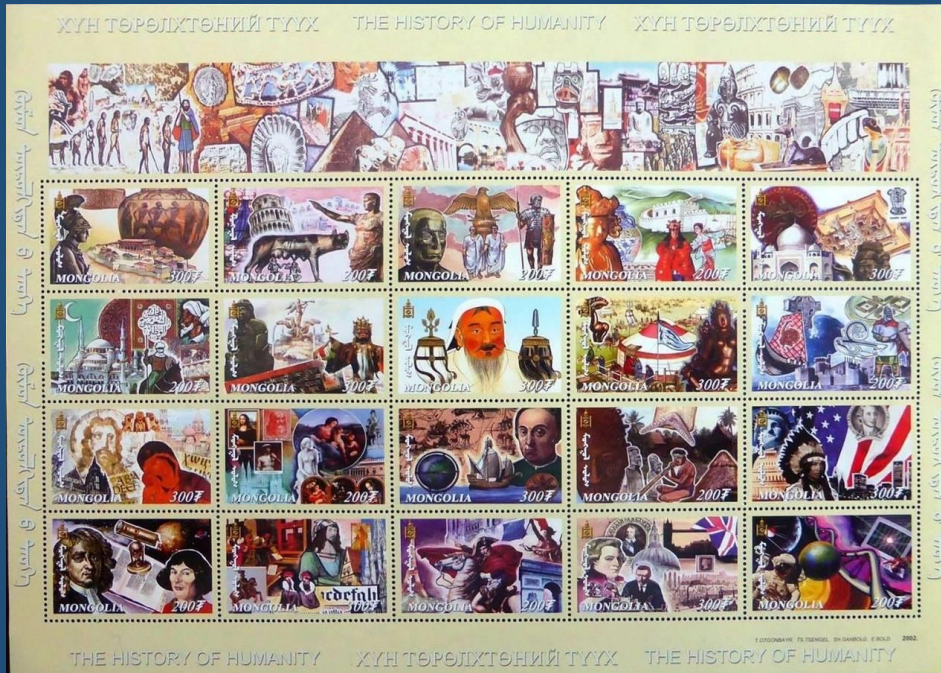
Scott: #2504a-t  
Issued: 30.12.2001  
History of Humanity





[?/?]

# #B21

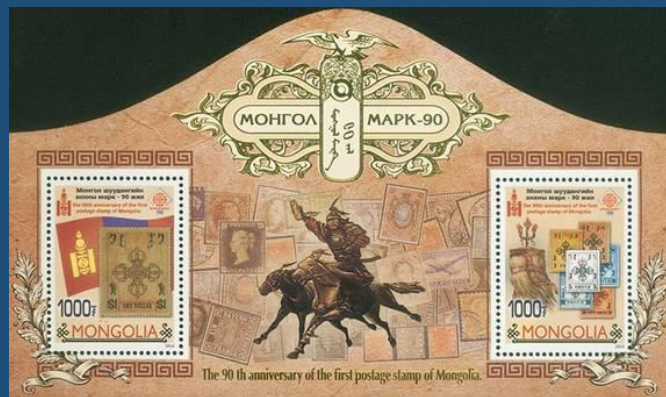


Scott: #2504



[?/?]

# #B30



Scott: #2817

Issued: 07.10.2014

90<sup>th</sup> Anniversary of Mongolian Stamps II





[M-G]

## #65 - #66



SW: #

Issued: 23.01.2023

60th MONGOLIA – Great Britain



Inside: Mongolia SW#1

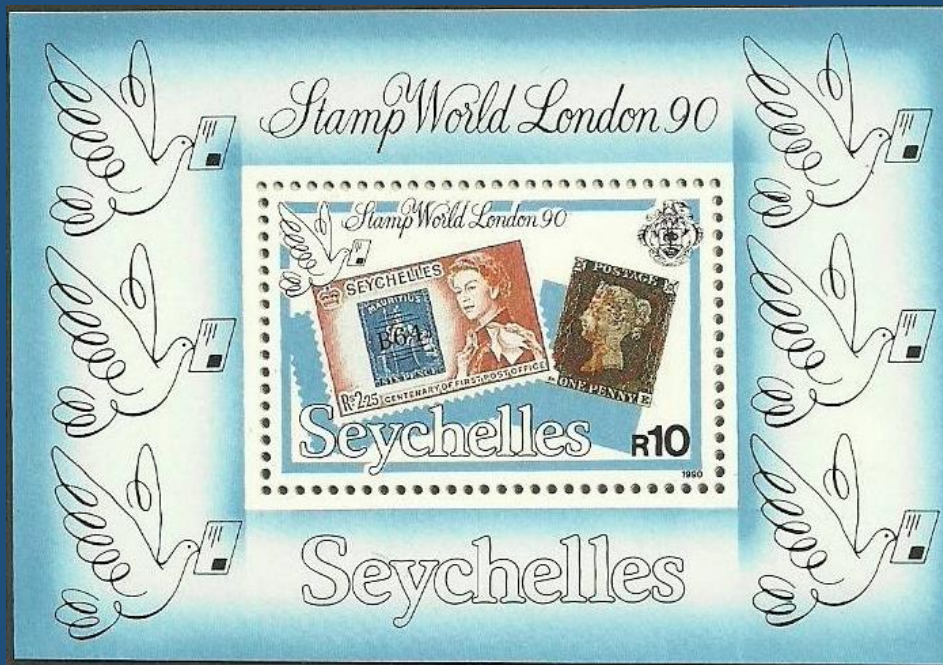


Inside: [S-C]

# Seychelles



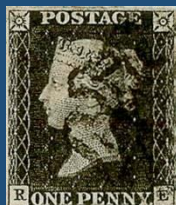
#B5



Scott: #708

Issued: 3.5.1990

150th Anniversary, Penny Black



[R-E]

# Singapore



#19



Scott: #566

Issued: 3.5.1990

150th Anniversary, Penny Black



[O-C]

#B4



Scott: #566a



[O-C]



# Sri Lanka



#15



Sw: #1641

Issued: 09.10.2015

World Post Day/ 175th Anniversary Penny Black



[S-L]

# Taiwan (ROC)



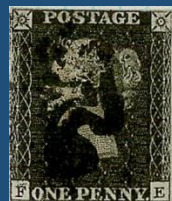
#10



Scott: #2166

Issued: 27.8.1979

Death Centenary of Sir Rowland Hill



[F-E]

# Transnistria



#B1



Michel #Block 117/650-651

Issued: 23.01.2016

175th Anniversary of World's First Postage Stamps



[M-F]



# Umm Al Quiwain



#1



SG #49-57

Issued: 17.2.1966

Centenary Stamp Exhibition – Cairo  
100<sup>th</sup> Anniversary of the first Egyptian stamps



[G-B]

#B1



SG MS 58



[G-B]

# #11



SG #71A

Issued: 00.11.1967

New Currency Provisionals



[G-B]



# Vietnam North



#3



Scott: #2646  
Issued: 15.8.1995  
200th Birthday, Sir Rowland Hill

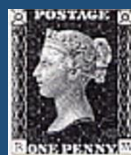


[Q-A]

#B1



Scott: #2965  
Issued: 22.5.2000  
Stamp Show 2000 Exhibition



[R-M wrong] (In Margin)