

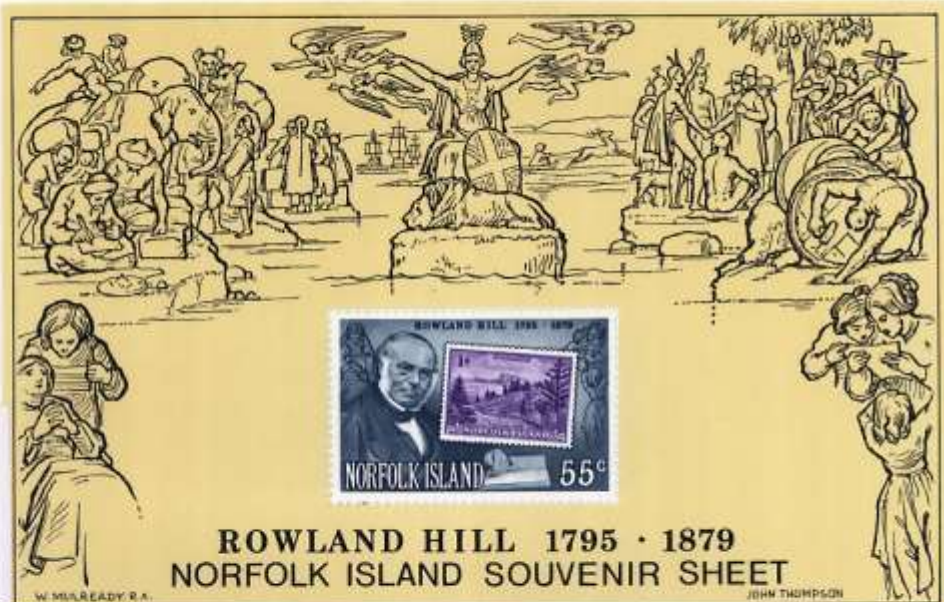
# Norfolk Island

(1947-)

Island in the South Pacific Ocean, east of Australia, under Australian administration. The inhabitants of Norfolk Island are largely descendants of the Bounty mutineers, whose ancestors immigrated to Norfolk from the Pitcairns in 1856.

1947-Norfolk Isl. n° 2  
€ 0,30

SOS-1979-Norfolk Isl.  
Y&T n°227  
100° Death Sir R. Hill



1947-Norfolk Isl. n° 2  
€ 0,30

SOS-1979-Norfolk Isl.  
Y&T n°B2  
100° Death Sir R. Hill

1949-Norfolk Isl. n° 4  
 € 0,80

SOS-1997-Norfolk Isl.  
 Y&T n°621/2  
 50\* Stamps



1949-Norfolk Isl. n° 12  
 € 11,00

SOS-1997-Norfolk Isl.  
 Y&T n°623  
 50\* Stamps



1954 - Norfolk Isl. n° 15 (II)  
 1974 - n° 151 (I)  
 € 7,00 - 4,50

1980 - Preprinted Cover  
 1982 - Postal Card

SOS-1984-Norfolk Isl.  
 Y&T n°B6  
 Ausipex '84



Melbourne, 21-30 September, 1984.

1954 - Norfolk Isl. n° 15 (II)  
 1974 - n° 151 (I)  
 € 7,00 - 4,50  
 SOS-1984-Norfolk Isl.  
 Y&T n°340  
 Ausipex '84



1970-Norfolk Isl. (II)  
 n° 110 - € 2,25  
 SOS-2013-Uganda  
 Y&T n° B  
 Owls on Stamps



1980-Norfolk Isl.  
 Preprinted Cover  
 SOS-1984-Norfolk Isl.  
 Y&T n°341  
 Ausipex '84



1982-Norfolk Isl. N° 294  
 Postal Card  
 SOS-1984-Norfolk Isl.  
 Y&T n°342  
 Ausipex '84



