

Portuguese Mozambique

(1877-1975)

A republic on the southeast coast of Africa. Portuguese settlements began in the 16th century, and the colony remained a Portuguese possession until June 25, 1975, when it became independent as the People's Republic of Mozambique.

1877-Port. Mozambique
n°1 - € 1,00

SOS-1976-Mozambique
Y&T n° 610/1
100° Mozambique Stamps



LONDRES, 3 A 13 DE MAIO DE 1990

MOÇAMBIQUE



1000MT



EXPOSIÇÃO
MUNDIAL
FILATÉLICA
LONDRES'90

1877-Port. Mozambique
n° 1 (II) - € 1,00

SOS-1990-Mozambique
Y&T n° B23
150° Peny Black



1877-Port. Mozambique
n° 1 - € 1,00

SOS-2015-Liberia
Y&T n°
First Stamps of UNO States



1877-Port. Mozambique
n° 1 (I) - € 1,00

SOS-1978-Mozambique
Y&T n° 557
CAPEX '78



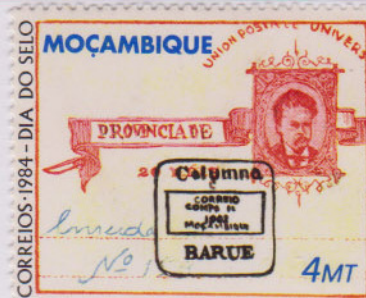
1877-Port. Mozambique
n°1 - € 1,00

SOS-1996-Mozambique
Y&T n°1327B
120° Mozambique Stamps



1885-Port. Mozambique
Postal Card

SOS-1984-Mozambique
Y&T n° 979
Stamp Day



1898-Port. Mozambique
n° 58 - € 3,00

SOS-1984-Mozambique
Y&T n° 980
Stamp Day



1951-Port. Mozambique
n° 387 (I) - € 1,00

SOS-1953-Mozambique
Y&T n° 439/40
Lourenco Marques Phil Exp

