

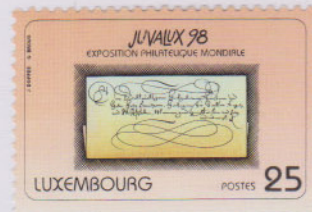
# Luxembourg

(1852-)

A grand duchy in western Europe, strategically located between Germany, France and Belgium. Until 1890, Luxembourg was ruled by a succession of foreign powers, although from 1815, it was technically independent, joined in personal union with the Netherlands. With the death of William III, king of the Netherlands and grand duke of Luxembourg, the country became completely independent. Luxembourg was occupied by Germany in both world wars.

1850-Luxembourg  
PRE PHILATELIC

SOS-1990-Luxembourg  
Y&T n° 1399  
Juvalux '98



William III



1849 - 1890

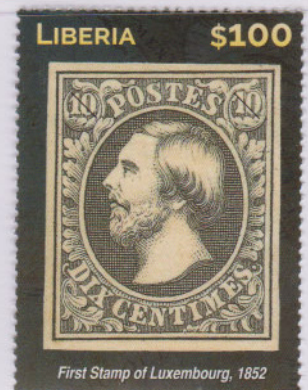
1852-Luxembourg n° 1  
€ 2.700

SOS-1984-Luxembourg  
Y&T n° 1041  
50° Luxembourg Phil. Fed.



1852-Luxembourg n° 1  
€ 2.700

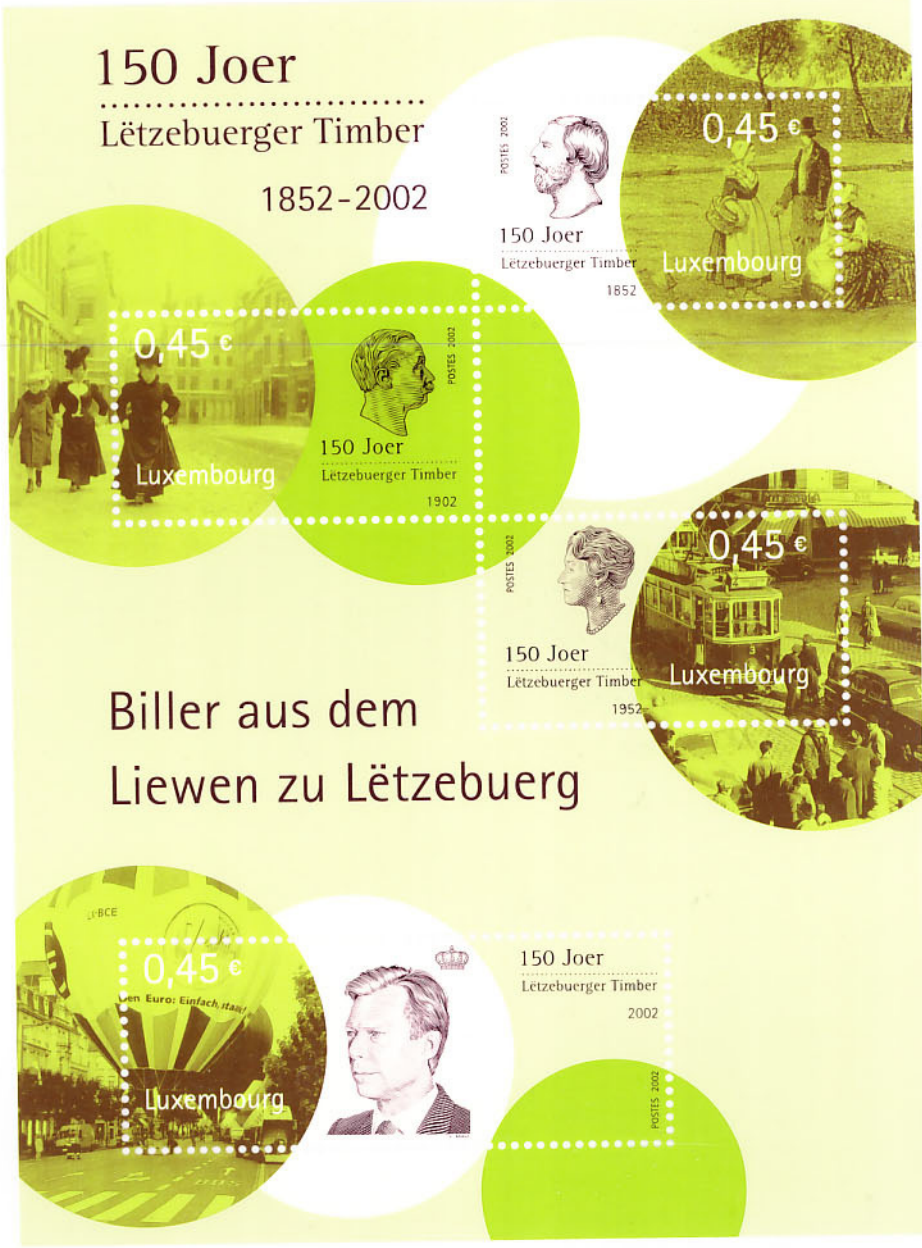
SOS-2015-Liberia  
Y&T n°  
First Stamps of UNO States



1852-Luxembourg n° 1  
 € 3,000  
 1895 - n° 69 - € 15,00  
 1948 - n° 413A - € 0,15  
 2001 - n° 1493 - € 0,20

SOS-2002-Luxembourg  
 Y&T n° B19  
 150° Luxembourg Stamps

150 Joer  
 Lëtzebuurger Timber  
 1852-2002



Biller aus dem  
 Liewen zu Lëtzebuerg

1852-Luxembourg n° 1/2  
€ 2.700 - 1.700

SOS-1977-Luxembourg  
Y&T n° B10  
125° Luxembourg Stamps



1852-Luxembourg n° 1/2  
€ 2'700 - 1'700

SOS-1977-Luxembourg  
Y&T n° 2005  
125° Luxemburg Stamps



1859-Luxembourg n° 6  
€ 230,00

SOS-1952-Luxembourg  
Y&T n° A16/17/18/19/20  
100° Luxembourg Stamps

