

Norway

(1855-)

A constitutional monarchy occupying the western portion of the Scandinavian Peninsula in northern Europe. A powerful kingdom in the Middle Ages, Norway later came under the domination of Denmark and, after 1814, Sweden. In 1905, Norway became completely independent. The country was occupied by Germany from 1940 to 1945. Following World War II, Norway abandoned its traditional neutrality and joined NATO.

1647-Norway PRE PHILATELIC

SOS-1995-Norway
Y&T n°1146
350° Norge Post



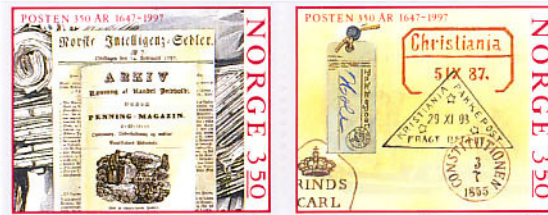
1745-Norway PRE PHILATELIC

SOS-1995-Norway
Y&T n°1147
350° Norge Post



1827-Norway (II) PRE PHILATELIC

SOS-1995-Norway
Y&T n°1150/1
350° Norge Post



1845-Norway PRE PHILATELIC

SOS-1995-Norway
Y&T n°1148
350° Norge Post

